



Apicomplexan Parasites Co-Opt Host Calpains to Facilitate Their Escape from Infected Cells
Rajesh Chandramohanadas *et al.*
Science **324**, 794 (2009);
DOI: 10.1126/science.1171085

This copy is for your personal, non-commercial use only.

If you wish to distribute this article to others, you can order high-quality copies for your colleagues, clients, or customers by [clicking here](#).

Permission to republish or repurpose articles or portions of articles can be obtained by following the guidelines [here](#).

The following resources related to this article are available online at www.sciencemag.org (this information is current as of July 15, 2014):

A correction has been published for this article at:
<http://www.sciencemag.org/content/326/5952/522.3.full.html>

Updated information and services, including high-resolution figures, can be found in the online version of this article at:
<http://www.sciencemag.org/content/324/5928/794.full.html>

Supporting Online Material can be found at:
<http://www.sciencemag.org/content/suppl/2009/04/01/1171085.DC1.html>

A list of selected additional articles on the Science Web sites **related to this article** can be found at:
<http://www.sciencemag.org/content/324/5928/794.full.html#related>

This article **cites 31 articles**, 15 of which can be accessed free:
<http://www.sciencemag.org/content/324/5928/794.full.html#ref-list-1>

This article has been **cited by** 7 article(s) on the ISI Web of Science

This article has been **cited by** 12 articles hosted by HighWire Press; see:
<http://www.sciencemag.org/content/324/5928/794.full.html#related-urls>

This article appears in the following **subject collections**:
Cell Biology
http://www.sciencemag.org/cgi/collection/cell_biol

Apicomplexan Parasites Co-Opt Host Calpains to Facilitate Their Escape from Infected Cells

Rajesh Chandramohanadas,¹ Paul H. Davis,² Daniel P. Beiting,² Michael B. Harbut,¹ Claire Darling,¹ Geetha Velmourougan,¹ Ming Yeh Lee,² Peter A. Greer,³ David S. Roos,² Doron C. Greenbaum^{1*}

Apicomplexan parasites, including *Plasmodium falciparum* and *Toxoplasma gondii* (the causative agents of malaria and toxoplasmosis, respectively), are responsible for considerable morbidity and mortality worldwide. These pathogenic protozoa replicate within an intracellular vacuole inside of infected host cells, from which they must escape to initiate a new lytic cycle. By integrating cell biological, pharmacological, and genetic approaches, we provide evidence that both *Plasmodium* and *Toxoplasma* hijack host cell calpain proteases to facilitate parasite egress. Immunodepletion or inhibition of calpain-1 in hypotonically lysed and resealed erythrocytes prevented the escape of *P. falciparum* parasites, which was restored by adding purified calpain-1. Similarly, efficient egress of *T. gondii* from mammalian fibroblasts was blocked by either small interfering RNA-mediated suppression or genetic deletion of calpain activity and could be restored by genetic complementation.

Apicomplexan parasites are obligate intracellular pathogens that exhibit complex life cycles involving distinct sexual and asexual stages of growth. The asexual phase is made up of a lytic cycle in which parasites establish an intracellular niche within the host: *Plasmodium* species infect erythrocytes, whereas *Toxoplasma gondii* infects nucleated animal cells. The process of schizogony in *Plasmodium* (endodyogeny in *Toxoplasma*) involves replication within a specialized “parasitophorous vacuole” to yield multiple daughter parasites (1, 2). The resulting merozoites (tachyzoites in *Toxoplasma*) must escape from this vacuole and the host cell to invade uninfected cells and continue the infection. Egress from the infected cell is a rapid event, requiring only seconds at the end of the ~36- to 48-hour intracellular life cycle (3, 4). Both calcium (5, 6) and proteases (4, 7–10) have been implicated in escape from the parasitophorous vacuole and/or host cell membranes.

In studies on *P. falciparum*, DCG04 (a biotinylated derivative of the nonspecific papain family protease inhibitor E64) labels multiple proteases in parasite lysates, including falcipain-1 (11). Although falcipain-1 is most abundant in extracellular merozoites, treatment of living *P. falciparum* cultures with DCG04 revealed a specific block in schizont-stage parasites (Fig. 1A). DCG04-treated merozoites developed normally (12) but became trapped within intact red blood cell (RBC) membranes. Cysteine proteases may play a role in host cell rupture (3, 4), suggesting

the feasibility of exploiting an activity-based probe such as DCG04 for affinity purification of the relevant enzyme(s).

To focus on those proteases most likely to be involved in parasite egress, infected cultures were labeled with DCG04, treated with saponin to permeabilize the RBC and parasitophorous vacuole

membranes, centrifuged briefly to remove parasite cells (which are not permeabilized by saponin), and pelleted to produce soluble and membrane-associated fractions (13). The ability of saponin to lyse the RBC and parasitophorous vacuole membranes selectively, while sparing the parasite plasma membrane, was confirmed by assaying leakage of a cytoplasmic green fluorescent protein (GFP) marker. Immunoblotting with antibodies to GFP, the parasite plasma membrane marker MSP1, the digestive vacuole marker plasmepsin-II, and the erythrocyte membrane marker stomatin showed efficient separation of erythrocyte components from parasite material (fig. S1).

Biotinylated DCG04 detected a single reactive peak of ~80 kD specific to membranes isolated from erythrocytes infected with schizont-stage parasites and maximal at ~48 hours postinfection (Fig. 1B). Mass spectrometry of DCG04-labeled material purified from a streptavidin affinity column unequivocally identified human calpain-1, based on 27 peptides (42% coverage) (table S1). Failure to label other cysteine proteases such as SERAs, falcipains, or other digestive vacuole enzymes (despite their abundance in infected cultures) confirms the removal of parasites and that digestive vacuole contents were not released during egress. DCG04 also failed to label the parasite's endogenous calpain, an essential cytoplasmic protease required for early cell cycle progression, but not for egress (14).

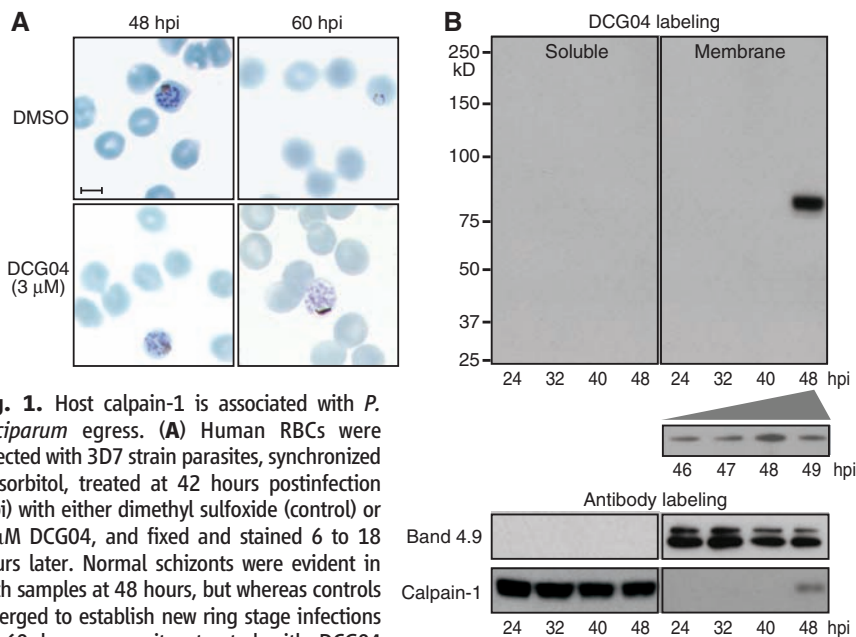


Fig. 1. Host calpain-1 is associated with *P. falciparum* egress. **(A)** Human RBCs were infected with 3D7 strain parasites, synchronized in sorbitol, treated at 42 hours postinfection (hpi) with either dimethyl sulfoxide (control) or 3 μM DCG04, and fixed and stained 6 to 18 hours later. Normal schizonts were evident in both samples at 48 hours, but whereas controls emerged to establish new ring stage infections by 60 hours, parasites treated with DCG04 appeared unable to egress, remaining arrested as schizonts. Scale bar, 5 μm. **(B)** Synchronized infected cultures were treated with 3 μM DCG04 for 2 hours beginning at various times throughout the intraerythrocytic life cycle, followed by incubation with 0.02% saponin to permeabilize the RBC and parasitophorous vacuole membrane (but not parasites). Parasites were removed by centrifugation, and the remaining material fractionated to yield a host + parasitophorous vacuole membrane pellet and a soluble fraction. Blotting identified proteins biotinylated by DCG04 (labeling any active cysteine protease), as well as the RBC membrane marker band 4.9, and calpain-1 (a cytoplasmic RBC protein when inactive). The single prominent ~80-kD band observed in membranes isolated from RBCs harboring schizont-stage parasites was identified as host cell calpain-1 (table S1).

¹Department of Pharmacology, University of Pennsylvania, Philadelphia, PA 19104, USA. ²Department of Biology and the Penn Genome Frontiers Institute, University of Pennsylvania, Philadelphia, PA 19104, USA. ³Department of Pathology and Molecular Medicine, Queen's Cancer Research Institute, Queen's University, Kingston, ON K7L 3N6, Canada.

*To whom correspondence should be addressed. E-mail: dorong@upenn.edu

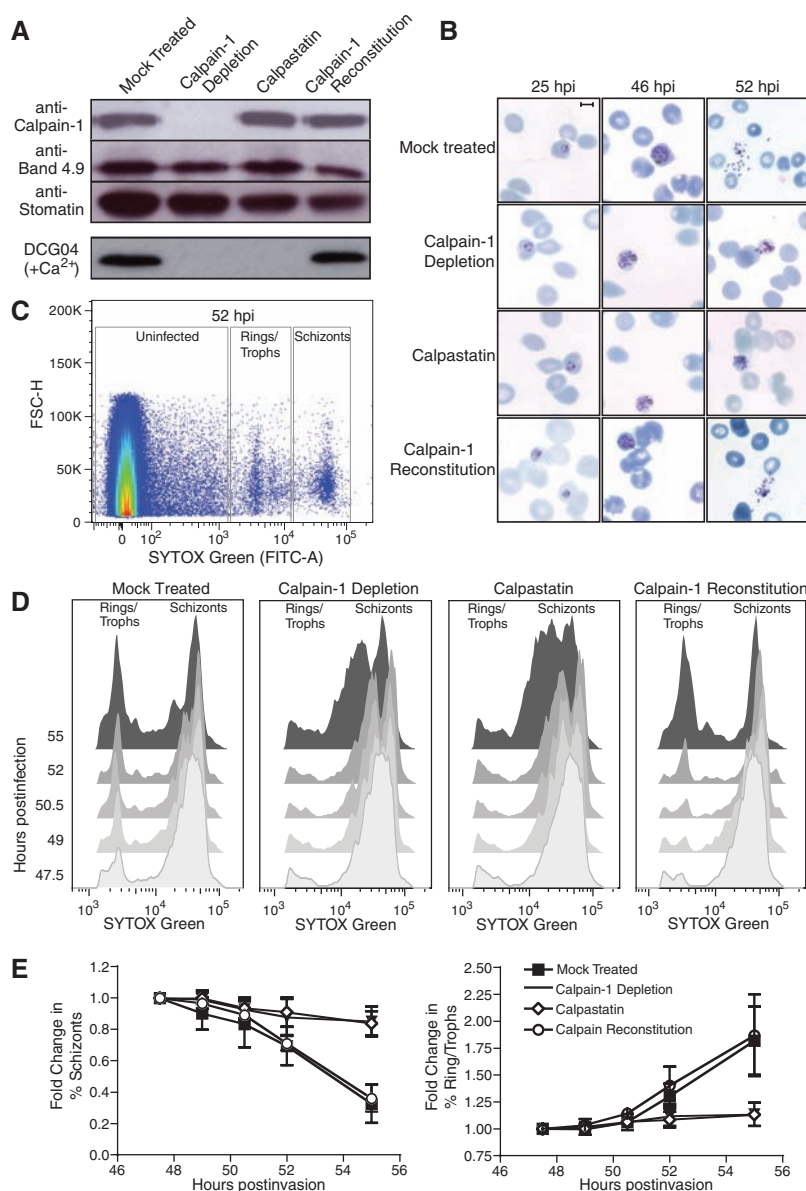


Fig. 2. Host calpain-1 is required for *P. falciparum* egress. Uninfected RBCs were hypotonically lysed, immunodepleted with monoclonal anti-calpain-1 conjugated to Sepharose (or mock-treated with Sepharose beads only), and resealed under hypotonic conditions in the presence of 1 μ M calpastatin, purified calpain-1, or buffer alone. (A) Immunoblots showed specific removal of calpain-1 in immunodepleted RBCs and reconstitution with purified enzyme; equal loading was confirmed with the use of anti-band 4.9 and anti-stomatatin. Labeling of resealed RBCs with 5 μ M DCG04 in the presence of calcium demonstrated that calpain activity was eliminated by either immunodepletion or calpastatin loading; activity was restored by reconstitution with exogenous calpain-1. (B) Purified schizont-stage parasites were mixed with resealed RBCs and incubated for various times before fixation. Giemsa-stained smears showed incomplete egress from calpain-depleted or calpastatin-loaded cells, but proper egress from RBCs reconstituted with purified calpain-1. Scale bar = 5 μ m. (C) During late schizogony, infected resealed RBCs were harvested at 90-min intervals, fixed, and stained for flow cytometry based on forward scatter (FSC-H) and parasite DNA content (SYTOX-Green). Boxes indicate gates defining uninfected cells, rings/trophozoites, and schizont-stage parasites (sample plot; see fig. S2B). (D) Flow cytometric data was gated to exclude uninfected erythrocytes and converted to a two-dimensional plot highlighting the progress of calpain-reconstituted cultures from schizonts to ring-stage infection as efficiently as mock treated controls, in contrast to the arrest of calpain-depleted and calpastatin-treated cells in schizogony, indicating an egress defect. (E) Quantitation of flow cytometric data (percentage of rings/trophozoites or schizonts relative to time $t = 0$, \pm SE, from four independent experiments).

Of the two common calcium-regulated cysteine proteases in human cells, calpains 1 and 2, only the former is found in erythrocytes, where it is the most abundant cysteine protease (15) (erythrocytes lack the hydrolytic enzymes associated with lysosomes). Calpains are normally inactive cytosolic enzymes, but upon binding calcium they become proteolytically active and associate with membranes (16, 17). Probing DCG04-labeled subcellular fractions of *P. falciparum*-infected erythrocytes with anti-calpain-1 antibody revealed abundant calpain-1 in the erythrocyte cytoplasm throughout the parasite growth cycle (Fig. 1B), but membrane-associated enzyme was found only during late schizogony. The observed pattern of membrane association coincides precisely with calpain activation as detected by the activity-based probe DCG04 (Fig. 1B).

As malaria parasites can replicate in hypotonically lysed and resealed erythrocytes (18), we employed a biochemical/cell biological approach to assess the role of calpains in *P. falciparum* egress. Lysed RBCs were incubated with anti-calpain-1 antibody conjugated to protein G Sepharose beads, allowing depletion of all detectable calpain-1 before resealing (Fig. 2A). Calpain-1 was also reconstituted into immunodepleted RBCs by resealing in the presence of purified, inactive calpain-1 (without calcium). Control samples were lysed and treated with unconjugated Sepharose (mock) or beads conjugated to anti-flotillin, and a mock-depleted sample was resealed in the presence of the 14-kD, non-cell permeable domain I of the highly specific calpain inhibitor calpastatin (19–21). DCG04 labeling of calcium-treated resealed erythrocytes confirmed that calpain-1 activity was removed by immunodepletion, that calpastatin loading blocked calpain-1 activity, and that reconstitution with calpain-1 restored activity to approximately wild-type (WT) levels (Fig. 2A).

Incubation of lysed and resealed erythrocytes with highly synchronized *P. falciparum* schizonts produced ~80% of the parasitemia levels observed during parallel infection of control erythrocytes (fig. S2A) (18). In calpain-1-depleted or calpastatin-loaded cells, however, development of intracellular parasites was arrested during late schizogony, and parasites failed to egress (Fig. 2B). Very few ring stage parasites were observed in calpain-1-depleted or calpastatin-loaded cells, even as late as 75 hours postinvasion. Flow cytometry of DNA content in infected RBCs was used as a quantitative measure of the intraerythrocytic *P. falciparum* life cycle (22), permitting the discrimination of schizonts from ring/trophozoite stages and uninfected RBCs (Fig. 2C and fig. S2B). Both resealed (mock treated) erythrocytes and erythrocytes immunodepleted by an antibody unrelated to calpain (anti-flotillin) (fig. S3) displayed normal kinetics of parasite growth and egress, progressing from ring stages (1 N) to multinucleated schizonts (~16 N), followed by egress and reinvasion to produce rings in fresh erythrocytes ~50 hours postinfection (Fig. 2, D

and E). Calpastatin-loaded and calpain-1 immunodepleted erythrocytes progressed to schizonts with normal kinetics but arrested in late schizogony, producing few new ring-stage infections (the broad “schizont” peak observed at late time points probably represents dying parasites). Erythrocyte ghosts reconstituted with purified calpain-1 after immunodepletion restored the transition from schizonts to rings.

Thus, calpain-1 activity is required for efficient egress of *P. falciparum* parasites from infected human erythrocytes in vitro, but it is difficult to assess the importance of calpain-mediated parasite egress in vivo because RBCs are not readily amenable to genetic manipulation. Calpain-1 deficiency has not been described in humans, and *P. falciparum* will not infect rodent erythrocytes. *P. yoelii* will infect calpain-1 knockout (KO) mice (23), but these parasites

preferentially invade reticulocytes (24), which express both calpain-1 and calpain-2 (25) (National Center for Biotechnology Information GEO profile GDS2655), in contrast to human erythrocytes, which express calpain-1 only (15). Genetic deletion of either calpain-2 (26) or the CAPNS1 regulatory subunit required for activity of both calpains (27) produces embryonic lethality in mice.

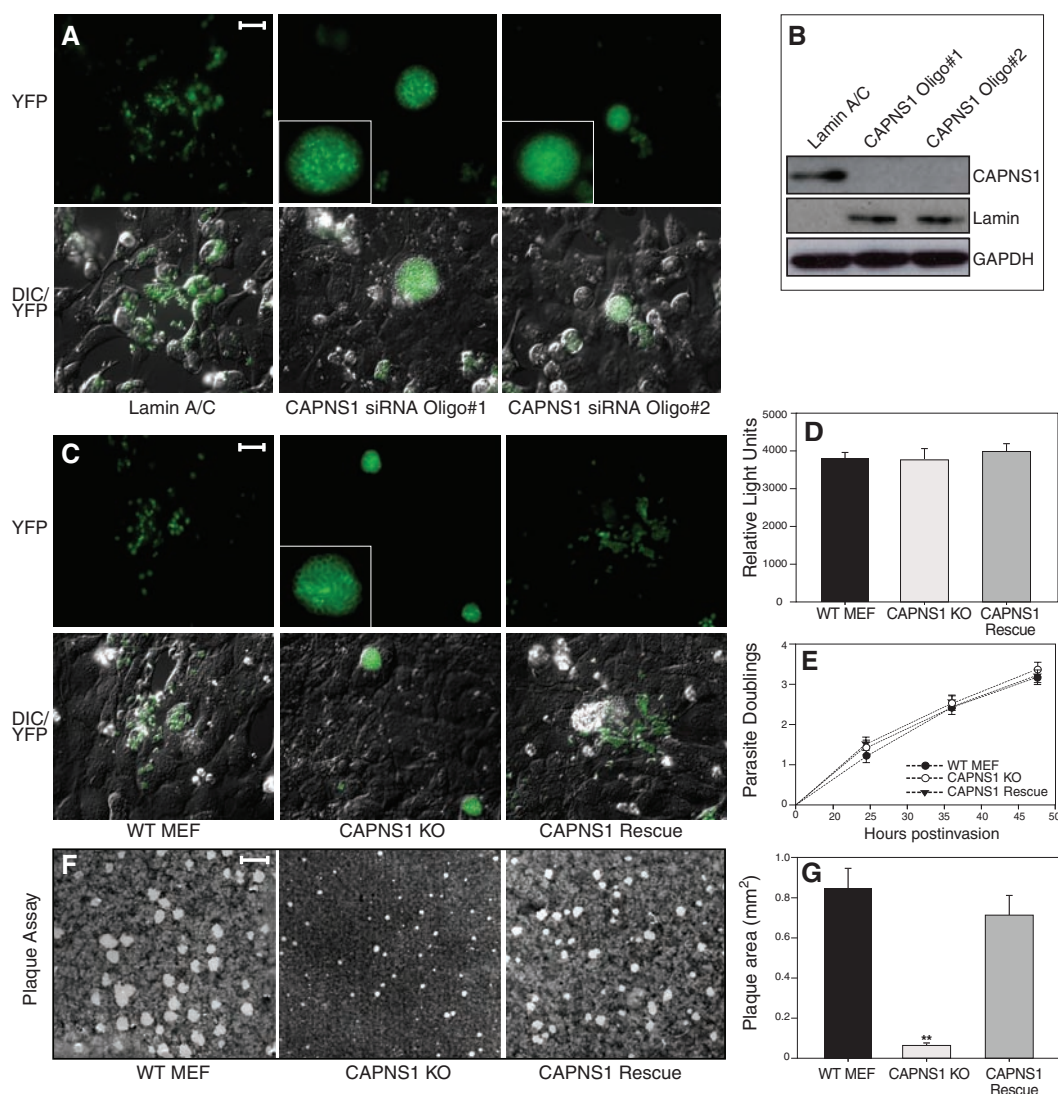
To further explore the importance of calpains during parasite infection, we turned to the apicomplexan parasite *T. gondii*, which is related to *Plasmodium* but able to invade, establish its parasitophorous vacuole, and replicate in virtually any nucleated cell (28). WT fibroblasts are typically lysed by *T. gondii* parasites ~48- to 60-hours postinfection, releasing free tachyzoites into the medium, whereupon they invade new host cells. This process is readily visualized in

living cultures using transgenic parasites expressing a fluorescent protein reporter (29). Although CAPNS1 KO mice die as embryos (27), KO cell lines and small interfering RNA (siRNA) approaches provide alternative experimental routes to assess the importance of calpain for *T. gondii* egress.

Most mammalian cells express both calpain-1 and 2, but targeting the regulatory subunit CAPNS1 permits the elimination of both. Two oligonucleotides were employed (independently) for siRNA studies in U2OS human host cells, both of which produced >20-fold reduction in CAPNS1 transcript levels and even greater protein depletion (Fig. 3B). Many extracellular *T. gondii* tachyzoites could be seen after infection of control cultures, but very few were observed after transfection with either of the CAPNS1 siRNAs (Fig. 3A). Rather, these cultures were character-

Fig. 3. Host calpain facilitates the egress of *T. gondii*.

(A) U2OS cells were transfected with siRNAs targeting either the common calpain regulatory subunit CAPNS1 (two different siRNAs) or lamin A/C, infected 24 hours post-transfection with *T. gondii* parasites expressing yellow fluorescent protein (YFP), and examined by fluorescence microscopy 56 hours later. Parasites ruptured out of most infected cells in controls, but not the knockdown cultures, where infected cells were grossly swollen with intracellular parasites. Insets show enlarged images of parasite-containing vacuoles. Scale bar, 30 μ m. **(B)** Suppression of CAPNS1 protein levels was assessed in uninfected cells 72 hours post transfection using antibodies to CAPNS1, lamin A/C, and glyceraldehyde phosphate dehydrogenase (GAPDH). **(C)** YFP parasites were used to follow replication and egress in CAPNS1 KO host cells. By 56 hours postinfection, parasites had ruptured out of most cells in the WT and CAPNS1 rescue cultures, whereas CAPNS1 KO cells were heavily infected but unlysed. Scale bar, 30 μ m. **(D)** To follow infection, cells were inoculated with luciferase-expressing transgenic parasites, producing comparable numbers of intracellular tachyzoites 4 hours postinfection. **(E)** To assay intracellular replication, host cell monolayers were infected with parasites, and parasitophorous vacuoles were scored every 12 hours for the number of parasites per vacuole, demonstrating comparable growth rates throughout the intracellular growth cycle (represented as log₂ parasite count). **(F)** Confluent fibroblast monolayers were infected with *T. gondii* tachyzoites, and plaques were stained with crystal violet at 7 days, demonstrating comparable rates of infection but very small plaques in the CAPNS1 KO cultures, as a consequence of the egress defect in this



mutant host cell line. Scale bar, 2 mm. **(G)** Quantitation of plaque size revealed a substantial decrease in the CAPNS1 KO versus WT and CAPNS1 rescued cells (average radius of 20 randomly selected plaques per sample \pm SE). Asterisks indicate the statistical significance using a Student’s two-tailed *t* test comparing CAPNS1 KO to WT, which yielded a *P* value of 1.91×10^{-7} .

ized by host cells packed full of fluorescent parasites unable to egress efficiently. These grossly swollen cells often detached from the monolayer and could be found floating in the culture medium giving the appearance of a hot air balloon convention.

Fibroblast cell lines derived from CAPNS1 KO mouse embryos lack both calpain-1 and -2 activity (30), and infection of these cells with *T. gondii* produced the same swollen cell phenotype observed in CAPNS1 knock-down experiments (Fig. 3C). Transgenic expression of CAPNS1 in the KO mutants restores calpain-1 and -2 activity (30) and also complemented the *T. gondii* egress defect. Parasite tachyzoites were readily able to invade (Fig. 3D) and replicate (Fig. 3E) in WT, CAPNS1 KOs, and CAPNS1-complemented fibroblasts, demonstrating that the impact of host cell calpains on *T. gondii* infection is specific to egress. Plaque assays showed a ~13-fold reduction in plaque size for *T. gondii* in CAPNS1 mutants versus parental MEF cells or CAPNS1-complemented KOs (Fig. 3, F and G). In contrast to *P. falciparum*, which rarely emerge from calpain-depleted erythrocytes (Fig. 2), some *T. gondii* parasites did eventually manage to escape from calpain-deficient fibroblasts, yielding a small plaque phenotype.

In summary, in addition to the many roles that parasite-encoded cysteine proteases play in the biology of infection and pathogenesis (25), the apicomplexans *Plasmodium falciparum* and *Toxoplasma gondii* both exploit host cell calpains to facilitate escape from the intracellular parasitophorous vacuole and/or host plasma membrane. The precise mechanism of calpain-mediated parasite egress is unknown, but calpains play a role in remodeling of the cytoskeleton and plasma membrane during the migration of mammalian cells (31), and activated calpain-1 can degrade erythrocyte cytoskeletal proteins in vitro and during *P. falciparum* infection in vivo (fig. S4). The calcium responsible for calpain activation during parasite infection may be supplied through the action of a parasite-encoded perforin recently implicated in *T. gondii* egress (32). The parasitophorous vacuole was labeled by the calcium-specific dye Fluo-4-AM during late schizogony, and depletion of internal calcium with the membrane-permeant chelator EGTA-AM blocked parasite egress, whereas removal of calcium from the culture medium did not (fig. S5). We suggest a model in which a calcium signal triggered late during parasite infection activates host cell calpain, which relocates to the host plasma membrane, cleaving cytoskeletal proteins to facilitate parasite egress (fig. S6). Because parasites that fail to escape from their host cells are unable to proliferate, this suggests an intriguing strategy for anti-parasitic therapeutics.

References and Notes

- M. Nishi, K. Hu, J. M. Murray, D. S. Roos, *J. Cell Sci.* **121**, 1559 (2008).
- K. Hu et al., *Mol. Biol. Cell* **13**, 593 (2002).
- S. Glushakova, D. Yin, T. Li, J. Zimmerberg, *Curr. Biol.* **15**, 1645 (2005).
- B. L. Salmon, A. Oksman, D. E. Goldberg, *Proc. Natl. Acad. Sci. U.S.A.* **98**, 271 (2001).
- M. W. Black, G. Arrizabalaga, J. C. Boothroyd, *Mol. Cell Biol.* **20**, 9399 (2000).
- K. Nagamune et al., *Nature* **451**, 207 (2008).
- T. Hadley, M. Aikawa, L. H. Miller, *Exp. Parasitol.* **55**, 306 (1983).
- M. E. Wickham, J. G. Culvenor, A. F. Cowman, *J. Biol. Chem.* **278**, 37658 (2003).
- S. Arastu-Kapur et al., *Nat. Chem. Biol.* **4**, 203 (2008).
- S. Yeoh et al., *Cell* **131**, 1072 (2007).
- D. C. Greenbaum et al., *Science* **298**, 2002 (2002).
- S. Glushakova, J. Mazar, M. F. Hohmann-Marriott, E. Hama, J. Zimmerberg, *Cell. Microbiol.* **11**, 95 (2009).
- Materials and methods are available as supporting material on Science Online.
- I. Russo, A. Oksman, B. Vaupel, D. E. Goldberg, *Proc. Natl. Acad. Sci. U.S.A.* **106**, 1554 (2009).
- E. M. Pasini et al., *Blood* **108**, 791 (2006).
- D. E. Croall, K. Ersfeld, *Genome Biol.* **8**, 218 (2007).
- D. E. Goll, V. F. Thompson, H. Li, W. Wei, J. Cong, *Physiol. Rev.* **83**, 731 (2003).
- S. C. Murphy et al., *PLoS Med.* **3**, e528 (2006).
- R. A. Hanna, R. L. Campbell, P. L. Davies, *Nature* **456**, 409 (2008).
- T. Moldoveanu, K. Gehring, D. R. Green, *Nature* **456**, 404 (2008).
- S. Gil-Parrado et al., *Biol. Chem.* **384**, 395 (2003).
- A. E. Bianco, F. L. Batty, G. V. Brown, *Exp. Parasitol.* **62**, 275 (1986).
- M. Hanspal, V. K. Goel, S. S. Oh, A. H. Chishti, *Mol. Biochem. Parasitol.* **122**, 227 (2002).
- L. Weiss, J. Johnson, W. Weidanz, *Am. J. Trop. Med. Hyg.* **41**, 135 (1989).
- P. J. Rosenthal, *Int. J. Parasitol.* **34**, 1489 (2004).
- P. Dutt et al., *BMC Dev. Biol.* **6**, 3 (2006).
- J. S. Arthur, J. S. Elce, C. Hegadorn, K. Williams, P. A. Greer, *Mol. Cell Biol.* **20**, 4474 (2000).
- D. S. Roos, R. G. Donald, N. S. Morrisette, A. L. Moulton, *Methods Cell Biol.* **45**, 27 (1994).
- K. A. Joiner, D. S. Roos, *J. Cell Biol.* **157**, 557 (2002).
- N. Dourdin et al., *J. Biol. Chem.* **276**, 48382 (2001).
- A. Huttenlocher et al., *J. Biol. Chem.* **272**, 32719 (1997).
- B. F. C. Kafsack et al., *Science* **323**, 530 (2009); published online 18 December 2008 (10.1126/science.1165740).
- We thank R. W. Doms, M. Marti, and M. Klemba for critical discussions; the Penn Proteomics Core for mass spectrometry; and M. A. Lampson for help with imaging. *P. falciparum* expressing GFP were provided by O. S. Harb. P.H.D. and D.P.B. are funded by National Research Service Awards, and D.S.R. is an Ellison Medical Foundation Senior Scholar in Global Infectious Disease, supported by grants from NIH, D.C.G. was supported by the Ritter Foundation, the Penn Genome Frontiers Institute, and the Penn Institute for Translational Medicine and Therapeutics.

Supporting Online Material

www.sciencemag.org/cgi/content/full/11711085/DC1
Materials and Methods

Figs. S1 to S6

Table S1

References

20 January 2009; accepted 10 March 2009

Published online 2 April 2009;

10.1126/science.11711085

Include this information when citing this paper.

Human Induced Pluripotent Stem Cells Free of Vector and Transgene Sequences

Junying Yu,^{1,2,3*} Kejin Hu,³ Kim Smuga-Otto,^{1,2,3} Shulan Tian,^{1,2} Ron Stewart,^{1,2} Igor I. Slukvin,^{3,4} James A. Thomson^{1,2,3,5*}

Reprogramming differentiated human cells to induced pluripotent stem (iPS) cells has applications in basic biology, drug development, and transplantation. Human iPS cell derivation previously required vectors that integrate into the genome, which can create mutations and limit the utility of the cells in both research and clinical applications. We describe the derivation of human iPS cells with the use of nonintegrating episomal vectors. After removal of the episome, iPS cells completely free of vector and transgene sequences are derived that are similar to human embryonic stem (ES) cells in proliferative and developmental potential. These results demonstrate that reprogramming human somatic cells does not require genomic integration or the continued presence of exogenous reprogramming factors and removes one obstacle to the clinical application of human iPS cells.

The proliferative and developmental potential of both human embryonic stem (ES) cells and human induced pluripotent stem (iPS) cells offers unprecedented access to the differentiated cells that make up the human body (1–3). In addition, iPS cells can be derived with a specific desired genetic background, including patient-specific iPS cells for disease models and for transplantation therapies, without the problems associated with immune rejection. Reprogramming of both mouse and human somatic cells into iPS cells has been achieved

by expressing combinations of factors such as *OCT4*, *SOX2*, *c-Myc*, *KLF4*, *NANOG*, and *LIN28* (2–4). Initial methods used to derive human iPS cells used viral vectors, in which both the vector backbone and transgenes are permanently integrated into the genome (2, 3). Such vectors can produce insertional mutations that interfere with the normal function of iPS cell derivatives, and residual transgene expression can influence differentiation into specific lineages (2), or even result in tumorigenesis (5). Vector integration-free mouse iPS cells have been derived from

ERRATUM

Post date 23 October 2009

Reports: "Apicomplexan parasites co-opt host calpains to facilitate their escape from infected cells" by R. Chandramohanadas *et al.* (8 May, p. 794). The following micrographs were inadvertently duplicated: (i) left-hand images in Fig. 1A, (ii) top-center image in Fig. 2B, and (iii) the first two panels in rows 2 and 3 of Fig. 2B. Thus, these experiments have been repeated by independent investigators, yielding the same conclusions as those originally reported. Corrected versions of the relevant figure panels, derived from these independent experimental replicates, are provided here.

